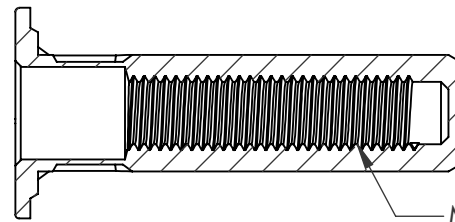
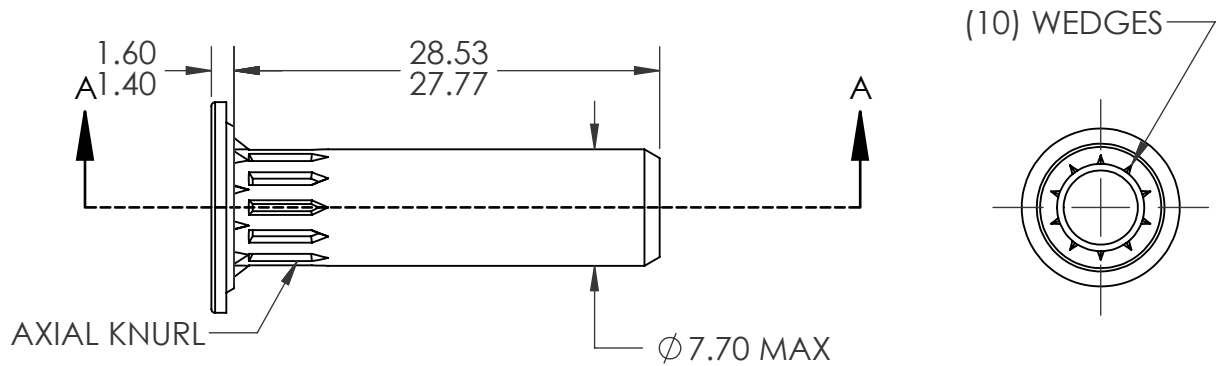
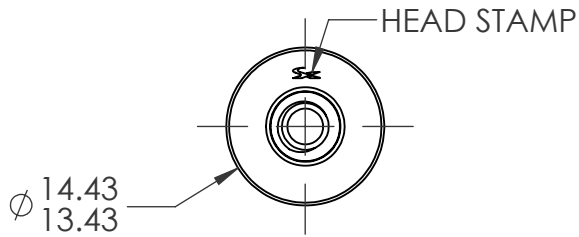


REVISIONS				
REV.	DESCRIPTION	DATE	ECN	INITIAL
A	INITIAL RELEASE	03/05/21	3793	FCG
B	UPDATE BODY DIAMETER	09/07/2022	4105	MRA



M4x0.7 6H
PER ASME B1.13M
MINOR DIA.: 3.25 - 3.42

SECTION A-A

NOTE:

- GRIP RANGE: 1.5 - 3.0
- HOLE SIZE: 7.60 +0.15/-0.00 AFTER ALL APPLIED FINISHES.
- INSTALLED LENGTH: 24.15 MAX.
- INSTALLED THREAD DEPTH: 20.0 MIN. IN MIN. GRIP
- LUBRICATION: NONE
- INSTALLATION TOOL: SPIN-PULL

PROPRIETARY AND CONFIDENTIAL
THIS DRAWING, AND THE INFORMATION CONTAINED HEREIN, ARE THE PROPERTY OF SHEREX AND ARE NOT TO BE USED IN ANY MANNER DETRIMENTAL TO THE INTEREST OF THE COMPANY.
SHEREX SOLUTIONS RESERVES THE RIGHT TO REVISE PART/DRAWING WITHOUT NOTICE.

		UNLESS OTHERWISE SPECIFIED:		NAME	DATE		
		DIMENSIONS ARE IN MILLIMETERS TOLERANCES: ANGULAR: MACH ± 1 BEND ± 1 ONE PLACE DECIMAL ± .3 TWO PLACE DECIMAL ± .08		DRAWN	FCG		03/05/21
		INTERPRET GEOMETRIC TOLERANCING PER: ASME Y14.5M-1994		CHECKED		TITLE: M4X0.7 LARGE FLANGE CLOSED END OPTISERT	
		MATERIAL C1008/C1010		ENG APPR.	CL		03/05/21
		FINISH ZINC PLATE CLEAR TRIVALENT CHROMATE PER SFS-01-001, SC1		MFG APPR.			
NEXT ASSY	USED ON			Q.A.			
APPLICATION		DO NOT SCALE DRAWING		COMMENTS: E-mail: info@sherex.com www.sherex.com Phone: 866-474-3739 Fax: 716-875-0358		SIZE DWG. NO. A OPT2-470-3.0B	
						REV B	
				SCALE: 2:1 WEIGHT:		SHEET 1 OF 1	